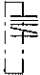
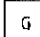
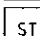

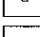
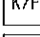
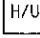

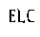
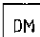
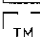
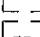


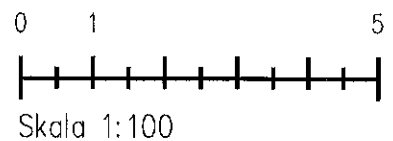
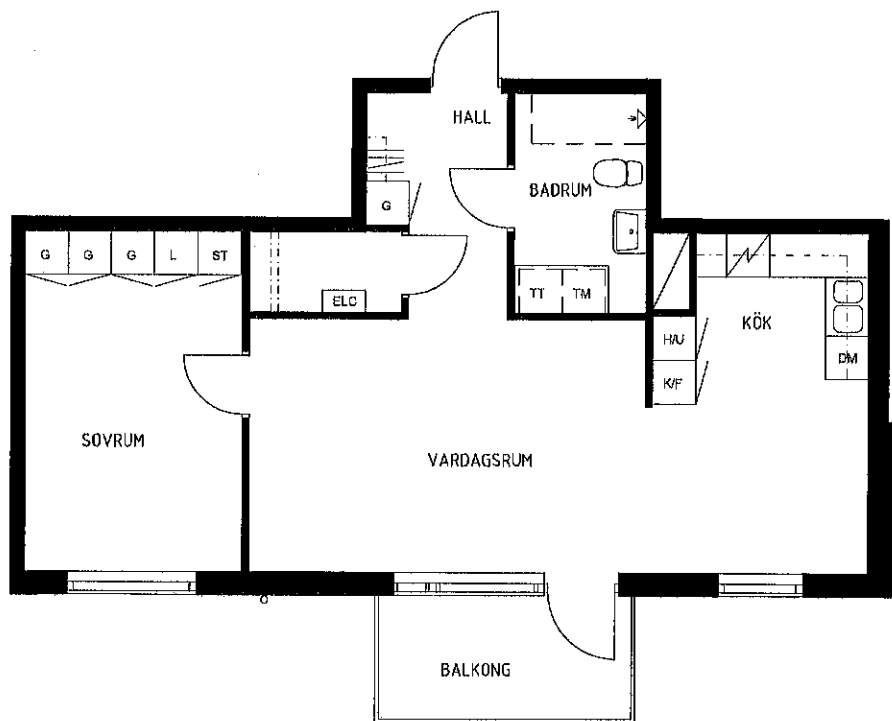
LGH D:12

2 RoK

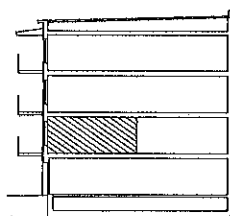
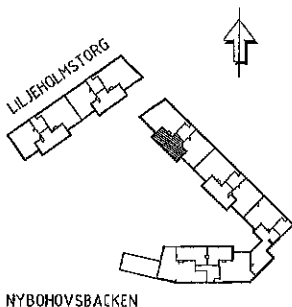
61,8 kvm

FÖRKLARINGAR

-  Kapphylla
-  Garderob
-  Stödsbänk
-  Linneskåp
-  Kyl-/frys-skåp
-  Högsåp med ugn
-  Spis
-  Elcentral
-  Diskmaskin
-  Plats för tvättmaskin
-  Plats för torktumlare
-  Plats för badkar



Kv. Liljeholmstorget Stockholm



Objektnr. 1291-15102

HEBA
FASTIGHETS AB

Lägenhetsblad 090827