

A hand-drawn floor plan showing a large room on the left and a kitchen area on the right. The large room is labeled 'RUM' and 'Rum 1'. The kitchen area is labeled 'Kök' and contains a 'HALL' and a 'BAD' (bathroom). There are door openings at the top and bottom of the main room, and a door with an arrow pointing down in the kitchen area.

RUM

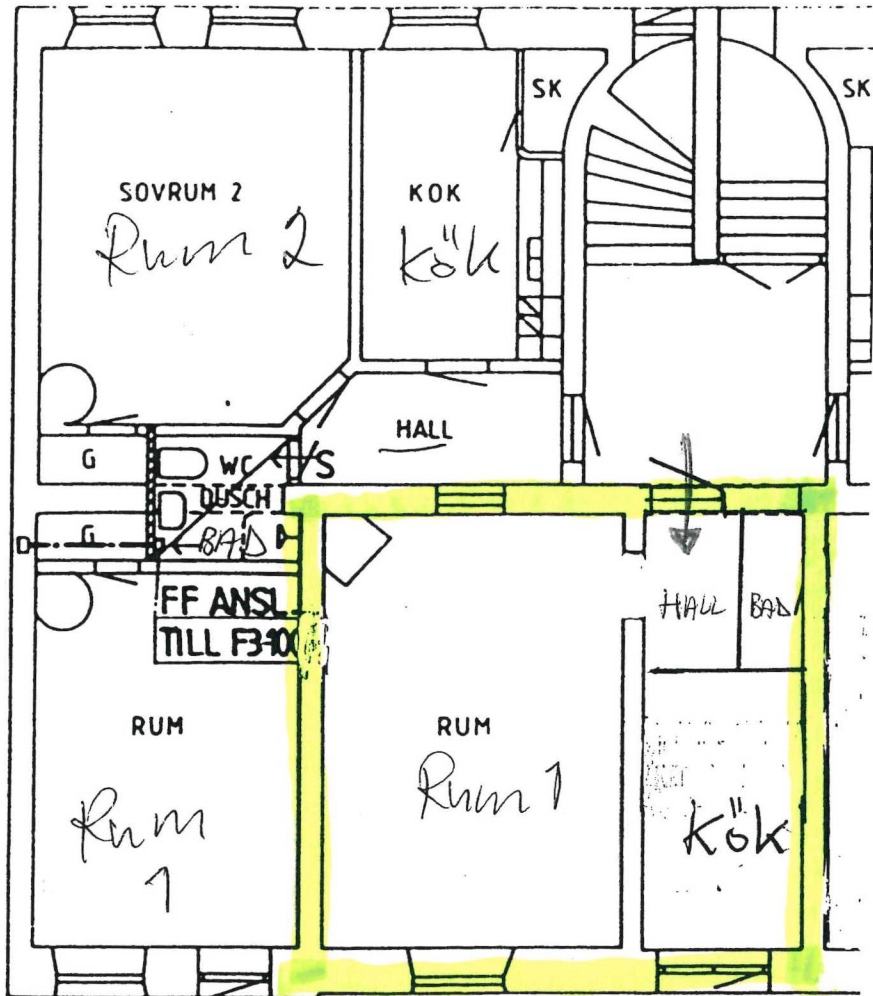
Rum 1

HALL

BAD

Kök

-3209



-3208

PLAN BOTTENVÅNING

2tr