

- 
- A hand-drawn floor plan of an apartment. The plan shows a central 'HALL' connecting several rooms: 'V-RUM' (Living Room) at the top, 'BAD' (Bathroom) and 'SIN ST' (Sink/Storage) to the left of the hall, 'KÖK' (Kitchen) at the bottom left, and 'S-RUM' (Bedroom) at the bottom right. A staircase is located on the left side of the kitchen. The number '8 3625' is written in blue ink in the upper left area of the plan.
- 1 3604
  - 2 3607
  - 3 3610
  - 4 3613
  - 5 3616
  - 6 3619
  - 7 3622
  - 8 3625

V-RUM

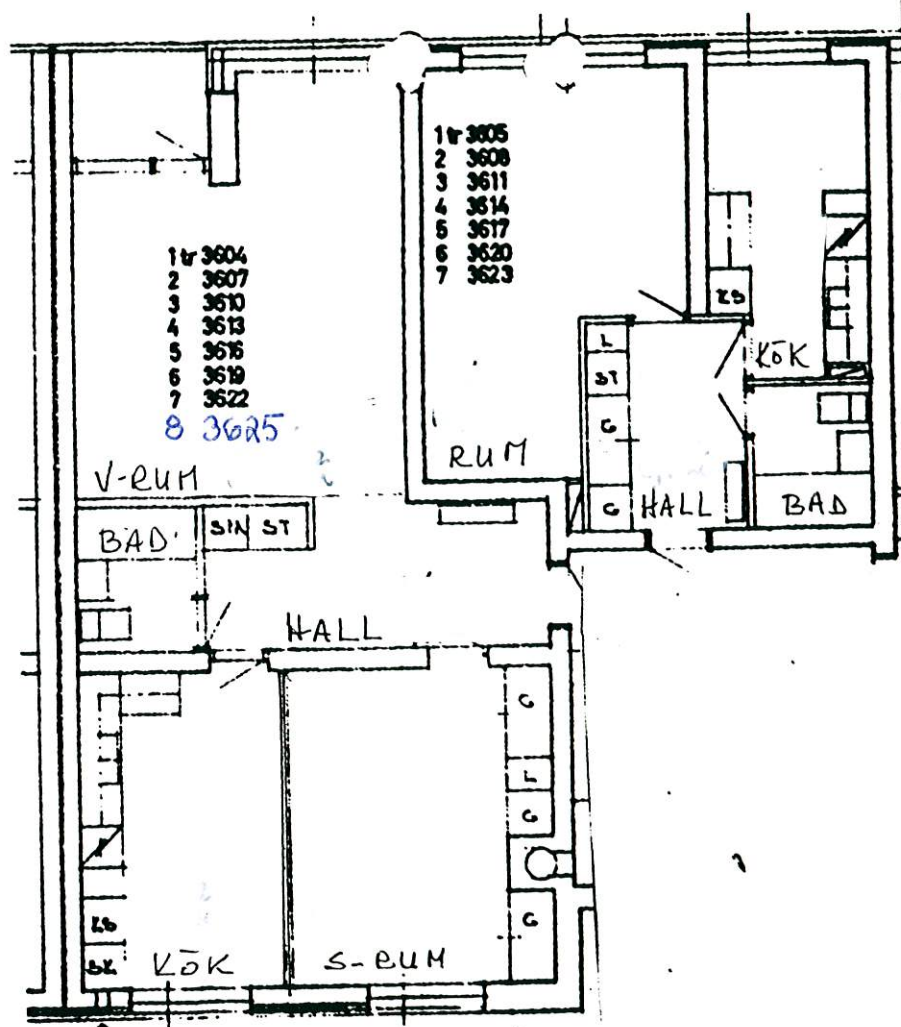
BAD

SIN ST

HALL

KÖK

S-RUM



SOLHAGAVÄGEN 20

VÄNINGSPLAN 1-8