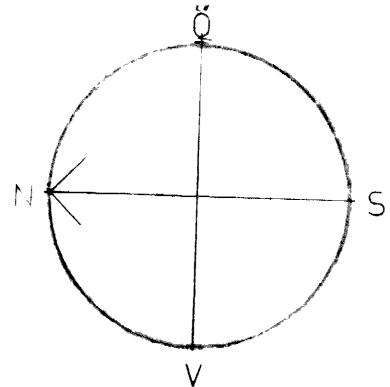
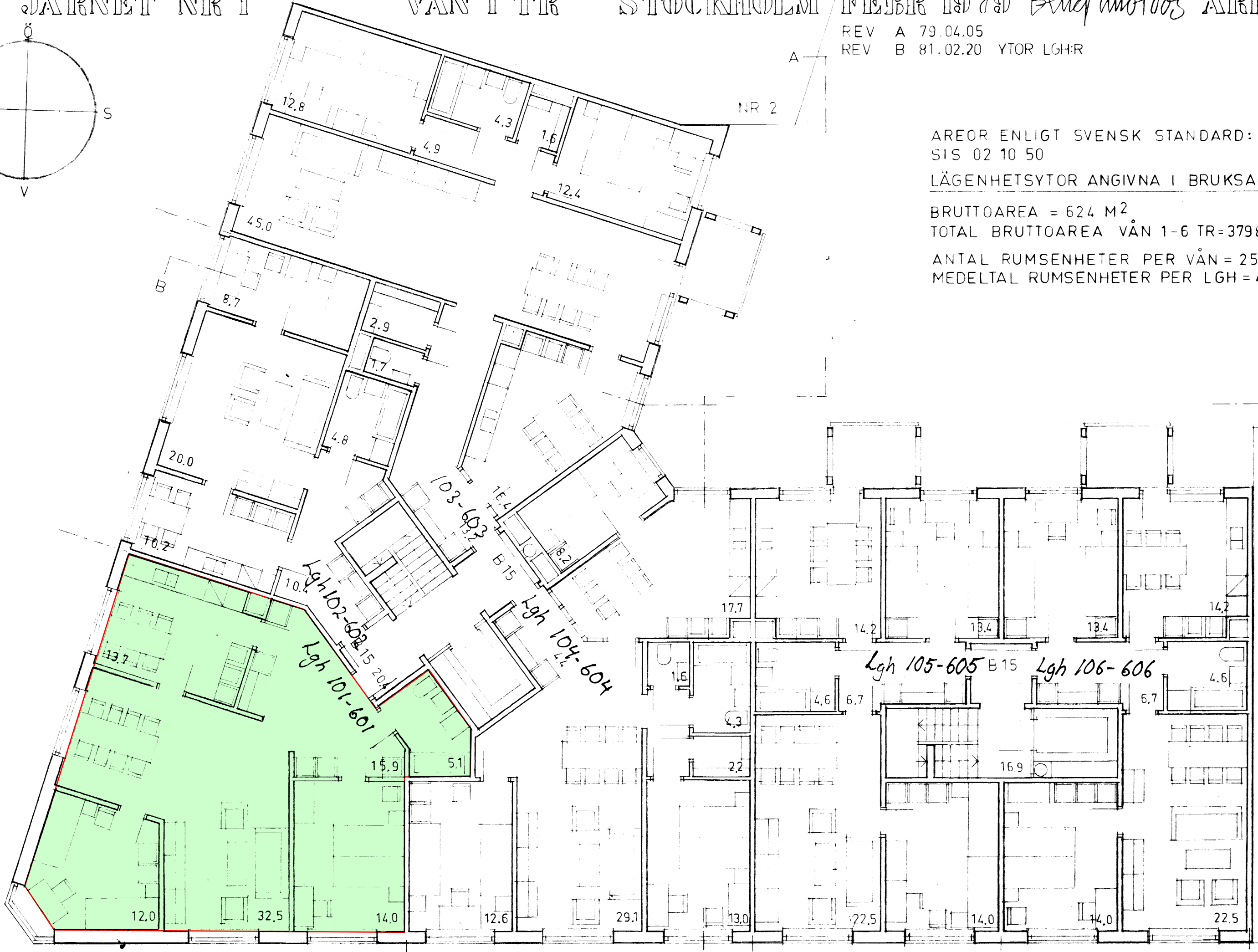


REV A 79.04.05  
REV B 81.02.20 YTOR LGH:R



SKALA 1m 0m  
1:100



AREOR ENLIGT SVENSK STANDARD:  
SIS 02 10 50  
LÄGENHETSYTOR ANGIVNA I BRUKSAREA  
BRUTTOAREA = 624 M<sup>2</sup>  
TOTAL BRUTTOAREA VÅN 1-6 TR=3798 M<sup>2</sup>  
ANTAL RUMSENHETER PER VÅN = 25 ST  
MEDELTA RUMSENHETER PER LGH = 4.16